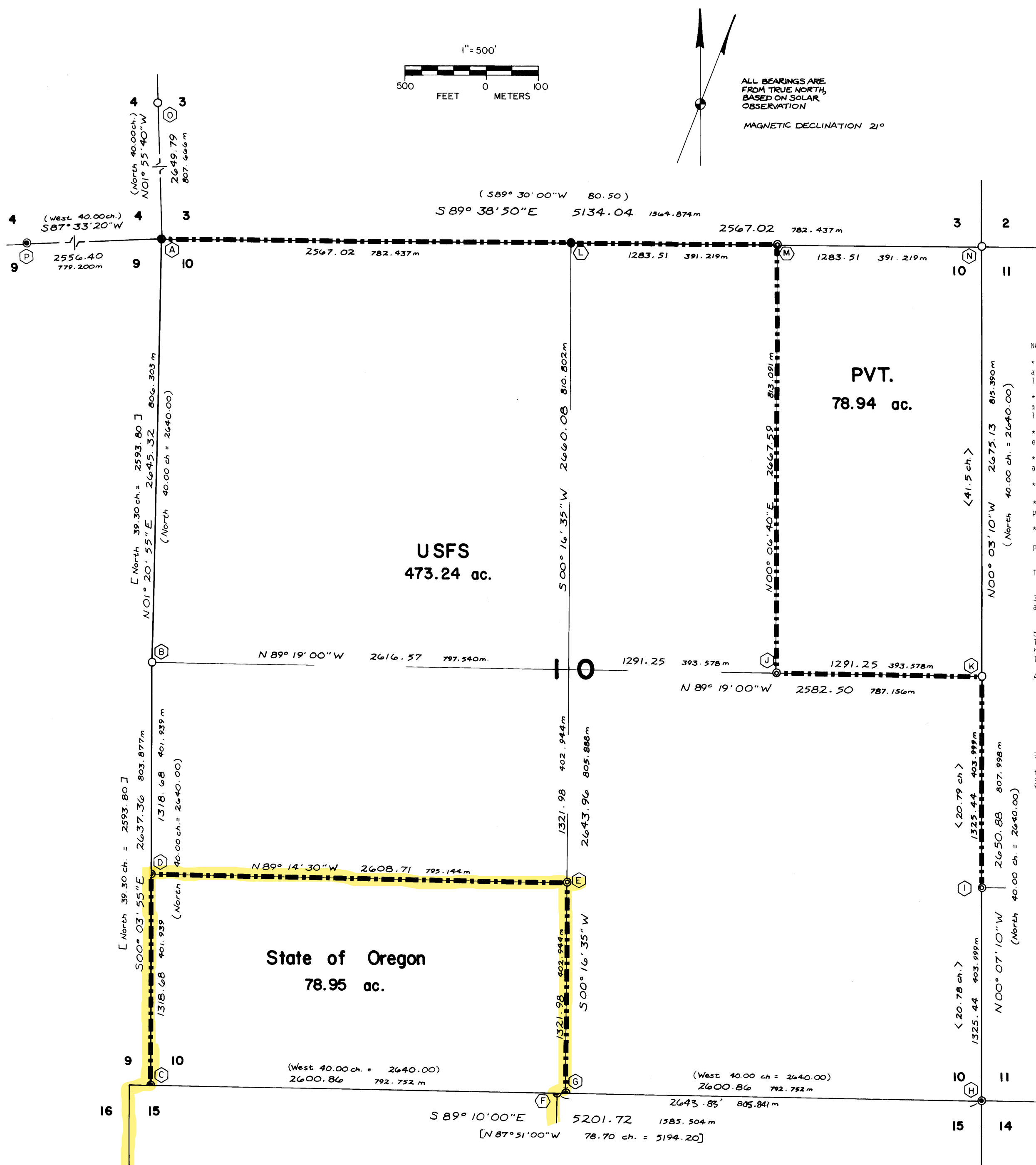


U.S. FOREST SERVICE FLYNN RANDALL
CADASTRAL SURVEY

FOR: SIUSLAW NATIONAL FOREST CONTRACT NO. 53-04HI-9-7206N
SECTION 10, T.12 S., R.9 W., W.M., LINCOLN COUNTY, OREGON
MARCH & APRIL, 1979

BY: TIMBERLAND SERVICES INC. - McCULLOUGH, BRYANT & ASSOCIATES, INC.
ALBANY - CORVALLIS, OREGON A JOINT VENTURE



C.S. #8498



McCullough, Bryant & Associates Incorporated

SURVEYING • ENGINEERING

April 7, 1980

Mr. John Hannah
Lincoln Co. Surveyor
225 W. Olive
Newport, OR 97365

John:

In regards to a survey on file bearing C.S. #8498 a question arose recently and I would hope that this clarification could be attached to and made a part of that record of survey.

The corner in question is section corner 3, 4, 9, and 10 and its subsequent reestablishment by double proportion. As you will note, Henderson was the original G.L.O. surveyor through the area in 1875. At that time he called into the corner at 40.00 chains from 3 directions. His return out of the corner going East was at 40.25 chains.

Porter subdivided the remainder of the township in 1893 and had a differing call into the corner from the South, 39.30 chains. There is no indication that he ever ran this line or the line from the 1/4 corner 4 and 9 to section corner 3, 4, 9, and 10. I believe these to be calculated.

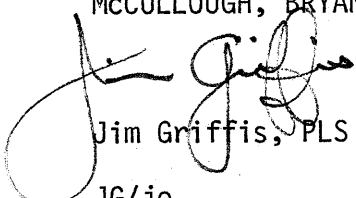
In order to compare only one man's chain with ours, we used the 1875 measure by Henderson who had measured in from all 4 directions, to fix our double proportionment position.

I hope this answers that question about not using the later return. If you have any further questions please don't hesitate to call.

I appreciate your cooperation on this matter!

Sincerely,

MCCULLOUGH, BRYANT & ASSOCIATES


Jim Griffis, PLS

JG/je

cc: Dick Chesebro, USFS
Dave Bateman, TSI